



BOARDROOM ELECTROL®

Automatic Electric Projection Screen

SPECIFICATION DATA

DA-LITE SCREEN COMPANY, INC.
 3100 North Detroit Street
 Post Office Box 137
 Warsaw, Indiana 46581-0137
 Phone: 574-267-8101
 800-622-3737
 Fax: 574-267-7804
 www.da-lite.com
 e-mail: info@da-lite.com

SUGGESTED SPECIFICATIONS: _____ projection screens, _____ (H) x _____ (W), electrically operated 120 volt (60Hz), 1.4 amp. Shall have specially designed motor mounted inside the roller with a patented noise silencer to be three wire quick reversal type, oiled for life, with automatic thermal overload cut-out, integral gears, capacitor and an electric brake to prevent coasting. To have preset but adjustable limit switches to automatically stop picture surface in the "up" and "down" positions. The roller to be of rigid metal, 3" in diameter. Screen fabric to be flame retardant and mildew resistant fiberglass with Glass Beaded, Matte White, Video Spectra® 1.5 or High Power picture surface with black masking borders standard. Bottom of fabric shall be formed into a pocket holding a 3/8" metal rod. The ends of the rod shall be protected by heavy-duty plastic caps. Case to be of wood with metal-lined wiring compartment. A section of the bottom of the case shall be a door equipped with hinges so that it opens and closes automatically with the lowering and raising of the picture surface. When the picture surface is being lowered, the door shall drop open by gravity. When the picture surface is being raised, the two ends of the slat in the bottom pocket of the screen fabric shall engage two hooks on the door to lift it to the closed position where a limit switch shall cut off the electrical current to the screen. The balance of the bottom of the case shall be a second hinged door with manual opening to provide access. Hinges shall be mounted to allow matching of the doors to the ceiling. Case to be finished with a black primer coat, ready to accept final finish by others. To be complete with three position control switch with cover plate. Screen to be listed by Underwriters' Laboratories and CSA.



Matte White: Horizontal seam required when both dimensions exceed 10'.

Glass Beaded: Horizontal seam required when both dimensions exceed 8'.

Video Spectra® 1.5: Available in sizes where both dimensions do not exceed 8'.

High Power: Available in sizes up to 9'x 12'. Horizontal seam required when both dimensions exceed 6'.

DIMENSIONS

Sizes		*Overall Length of Case		Approx. Ship. Wt.	
H x W	Cm	In.	Cm	Lbs.	Kg
50" x 50"	127 x 127	63-1/2"	161	64	29.0
60" x 60"	152 x 152	73-1/2"	186	73	33.1
70" x 70"	178 x 178	83-1/2"	211	83	37.7
84" x 84"	213 x 213	97-1/2"	248	95	43.1
6' x 8'	183 x 244	109-1/2"	278	101	45.8
8' x 8'	244 x 244	109-1/2"	278	105	47.6
7' x 9'	213 x 274	121-1/2"	309	112	50.1
9' x 9'	274 x 274	121-1/2"	309	119	54.0
8' x 10'	244 x 305	133-1/2"	339	130	59.0
10' x 10'	305 x 305	133-1/2"	339	134	60.8
9' x 12'	274 x 366	157-1/2"	400	137	62.1
12' x 12'	366 x 366	157-1/2"	400	159	72.1

VIDEO FORMAT DIMENSIONS

Viewing Area		Nominal Diagonal		*Overall Length of Case		Approx. Ship. Wt.	
H x W	Cm	In.	Cm	In.	Cm	Lbs.	Kg
43" x 57"	109 x 145	72"	183	73-1/2"	187	72	32.7
50" x 67"	127 x 170	84"	213	83-1/2"	212	79	35.8
57" x 77"	145 x 196	96"	244	97-1/2"	248	86	39.0
60" x 80"	152 x 203	100"	254	97-1/2"	248	91	41.3
69" x 92"	175 x 234	120"	305	109-1/2"	278	106	48.1
87" x 116"	221 x 295	150"	381	133-1/2"	339	129	58.5
105" x 140"	267 x 356	180"	457	157-1/2"	400	137	62.1
120" x 160"	305 x 406	200"	508	177-1/2"	441	154	69.9

HDTV FORMAT DIMENSIONS

Viewing Area		Nominal Diagonal		*Overall Length of Case		Approx. Ship. Wt.	
H x W	Cm	In.	Cm	In.	Cm	Lbs.	Kg
45" x 80"	114 x 203	92"	234	97-1/2"	248	91	41.3
52" x 92"	132 x 234	106"	269	109-1/2"	278	100	45.4
54" x 96"	137 x 244	110"	279	113-1/2"	288	105	47.6
58" x 104"	147 x 264	119"	302	121-1/2"	309	115	52.2
65" x 116"	165 x 295	133"	338	133-1/2"	339	119	54.0
78" x 139"	198 x 353	159"	404	157-1/2"	400	149	67.6

WHEN ORDERING, MAKE APPROPRIATE SELECTIONS:

Select size from charts above.

Select viewing surface:

- Matte White
- Glass Beaded
- Video Spectra® 1.5
- High Power

Optional Accessories:

- Black "Extra Drop" to lower picture area more than normal. Maximum total drop 13' including picture area.
- White "Extra Drop" to lower picture area more than normal. Maximum total drop 13' including picture area.
- Single Motor Low Voltage Control System - 3 Button.
- Wireless Remote Control for L.V.C. System.
 - Radio Frequency Remote.
 - Infrared Remote.
- Locking Switch Cover Plate for 120V or 3-Button Switch.
- Key Operated Switch for 120V only (NOTE: Cannot be used with low voltage system).
- No Borders (Black masking borders standard).
- 220 Volt (50 Hz) Motor.
- Video Projector Interface Control, 12V or 5V.
- External SCB-100 - RS-232 Serial Control Board
 - NET-100 Ethernet-Serial Adapter

* Add 3" to overall length of case for mounting brackets.

Overall case length dimensions ± 1/4".

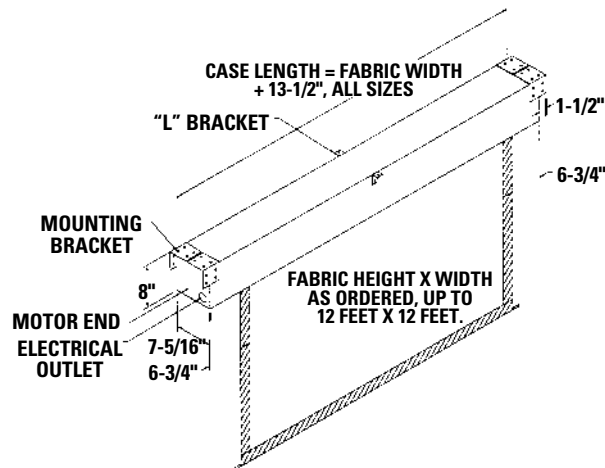
Detail dimensional drawings, wiring diagrams and installation instructions available upon request.

Specifications subject to change without notice.

Letterbox formats and custom sizes available upon request.

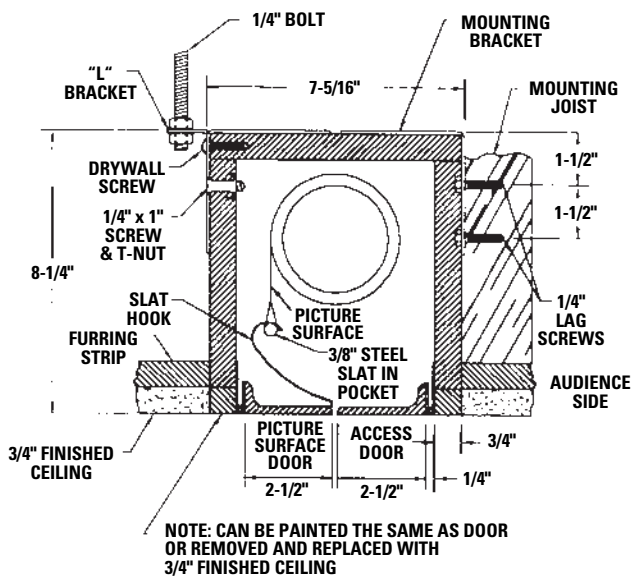
Project:	_____
Architect:	_____
Phone:	_____
Contractor:	_____
Phone:	_____
Supervisor:	_____
Phone:	_____
Supplier:	_____
Date:	_____
Revised:	_____

SUGGESTED METHODS OF INSTALLATION

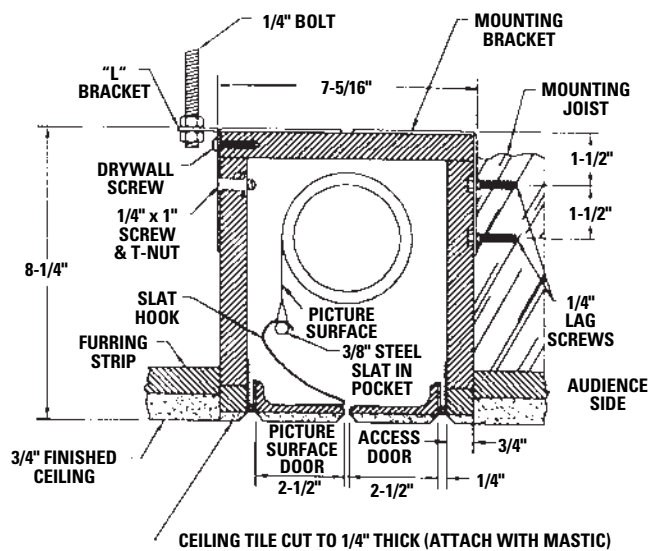


Select installation method according to ceiling type.

METHOD A



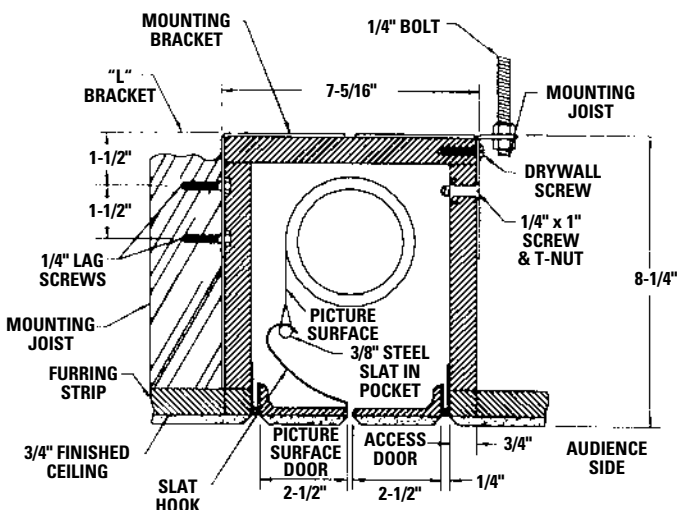
METHOD B



Offset mounting, recessed above ceiling. For plaster, dry wall, tile or paneling. Doors and bottom of case painted same finish as ceiling.

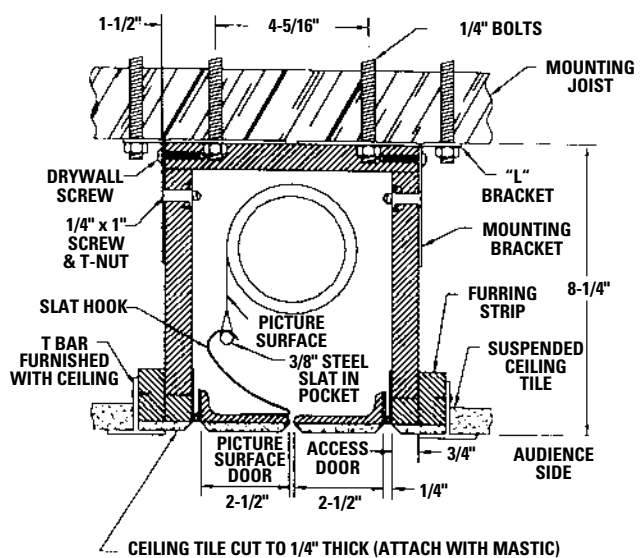
Offset mounting, recessed above ceiling. May be adapted for 3/4" ceiling, but cut to 1/4" thick under doors and screen case.

METHOD C



Flush mounting, recessed above ceiling. May be adapted for 1/4" paneling for ceiling and doors.

METHOD D



Flush mounting, recessed above ceiling. For use with dropped ceiling. May also be adapted for use with acoustical or other ceiling 3/4" thick but cut to 1/4" thick under doors and screen case.