



ADVANTAGE DELUXE ELECTROL®

Automatic Electric Projection Screen

DA-LITE SCREEN COMPANY, INC.
3100 North Detroit Street
Post Office Box 137
Warsaw, Indiana 46581-0137
Phone: 574-267-8101
800-622-3737
Fax: 574-267-7804
www.da-lite.com
e-mail: info@da-lite.com

SPECIFICATION DATA

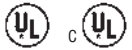
SUGGESTED SPECIFICATIONS: _____ projection screens, _____ (H) x _____ (W), size. The Advantage Deluxe Screen shall have two motors, one to operate door and one to operate screen. Door motor electrically operated 120 volt (60 Hz) 1.2 amp, mounted inside the roller, to be three wire with ground, quick reversal type, oiled for life, with automatic thermal overload cutout, integral gears, capacitor and an electric brake to prevent coasting. To have pre-set but adjustable limit switches to automatically stop fabric door in the "up" and "down" positions. The roller to be of rigid aluminum, 1-1/2" in diameter. Screen motor is electrically operated 120 volt (60 Hz) 1.4 amp, mounted inside the roller with a noise silencer to be three wire quick reversal type, oiled for life, with automatic thermal overload cutout, integral gears, capacitor and an electric brake to prevent coasting. To have pre-set but adjustable limit switches to automatically stop picture surface in the "up" and "down" positions. The roller to be of rigid metal, 3" in diameter. Screen fabric to be flame retardant and mildew resistant fiberglass with Glass Beaded, Matte White, High Contrast Matte White, High Power or Video Spectra® 1.5 with black masking borders standard. Bottom of fabric shall be formed into a pocket holding a 3/8" metal rod with plastic caps. Case shall be an aluminum extrusion. Bottom of case to be self-trimming with a built-in flange around the bottom of the case. Case to be white. Steel brackets bolted to the top of case for ceiling mounting. A section of the bottom of the case shall be an aluminum door equipped with concealed hinges so that it opens and closes automatically with the lowering and raising of the picture surface. The balance of the bottom of the case shall be a second hinged aluminum door with manual opening to provide access. Junction box shall be integrated into the housing making it possible to install the housing and wire to the building's electrical system during construction. The junction box shall contain a five prong connector that is mounted in the housing for easy plug-in connection to the motorized fabric and roller assembly. The motorized fabric and roller assembly to be installed in the case at the factory or at a later time at the job site. To be complete with three position control switch with cover plate. Suitable for use in environmental air space in accordance with section 300-22 (c) of the National Electric Code, and sections 2-128, 12-010 (3) and 12-100 of the Canadian Electrical Code, part 1, CSA C22.1. Screen to be listed by Underwriters' Laboratories.

Matte White: Horizontal seam required when both dimensions exceed 10'.

Glass Beaded: Horizontal seam required when both dimensions exceed 8'.

Video Spectra® 1.5 and High Contrast Matte White: Available in sizes where both dimensions do not exceed 8'.

High Power: Available in sizes up to and including 9' x 12'. Horizontal seam required when both dimensions exceed 6'.



VIDEO FORMAT DIMENSIONS

Viewing Area		Nominal Diagonal		Overall Length of Case		Approx. Ship. Wt.	
H x W	Cm	In.	Cm	In.	Cm	Lbs.	Kg
43" x 57"	109 x 145	72"	183	72-1/4"	184	83	37.7
50" x 67"	127 x 170	84"	213	82-1/4"	209	93	42.2
57" x 77"	145 x 196	96"	244	96-1/4"	244	108	49.0
60" x 80"	152 x 203	100"	254	96-1/4"	244	108	49.0
69" x 92"	175 x 234	120"	305	108-1/4"	275	119	54.0
87" x 116"	221 x 295	150"	381	132-1/4"	336	144	65.3
105" x 140"	267 x 356	180"	457	156-1/4"	397	168	76.2
120" x 160"	305 x 406	200"	508	176-1/4"	448	188	85.3

HDTV FORMAT DIMENSIONS

Viewing Area		Nominal Diagonal		Overall Length of Case		Approx. Ship. Wt.	
H x W	Cm	In.	Cm	In.	Cm	Lbs.	Kg
45" x 80"	114 x 203	92"	234	96-1/4"	244	108	49.0
52" x 92"	132 x 234	106"	269	108-1/4"	275	119	54.0
54" x 96"	137 x 244	110"	279	112-1/4"	285	120	54.4
58" x 104"	147 x 264	119"	302	120-1/4"	305	122	55.3
65" x 116"	165 x 295	133"	338	132-1/4"	336	144	65.3
78" x 139"	198 x 353	159"	404	156-1/4"	397	188	85.3

DIMENSIONS

Sizes		Overall Length of Case		Approx. Ship. Wt.	
H x W	Cm	In.	Cm	Lbs.	Kg
50" x 50"	127 x 127	62-1/4"	158	71	32.2
60" x 60"	152 x 152	72-1/4"	184	81	36.7
70" x 70"	178 x 178	82-1/4"	209	92	41.7
84" x 84"	213 x 213	96-1/4"	244	107	48.5
6' x 8'	183 x 244	108-1/4"	275	111	50.4
8' x 8'	244 x 244	108-1/4"	275	117	53.1
7' x 9'	213 x 274	120-1/4"	305	122	55.3
9' x 9'	274 x 274	120-1/4"	305	130	59.0
8' x 10'	244 x 305	132-1/4"	336	142	64.4
10' x 10'	305 x 305	132-1/4"	336	170	77.1
9' x 12'	274 x 366	156-1/4"	397	180	81.7
12' x 12'	366 x 366	156-1/4"	397	200	90.7

Overall case length dimensions ± 1/4".
Detail dimensional drawings, wiring diagrams and installation instructions available upon request.

Specifications subject to change without notice.
Letterbox formats and custom sizes available upon request.

WHEN ORDERING, MAKE APPROPRIATE SELECTIONS:

Select size from charts on the other side.

Select viewing surface:

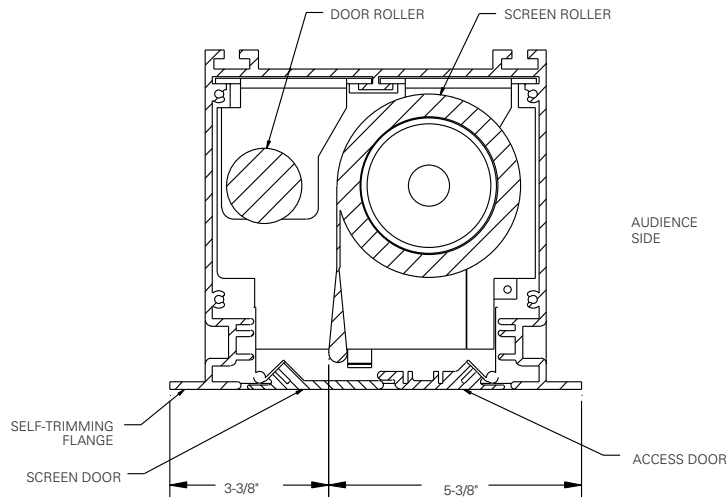
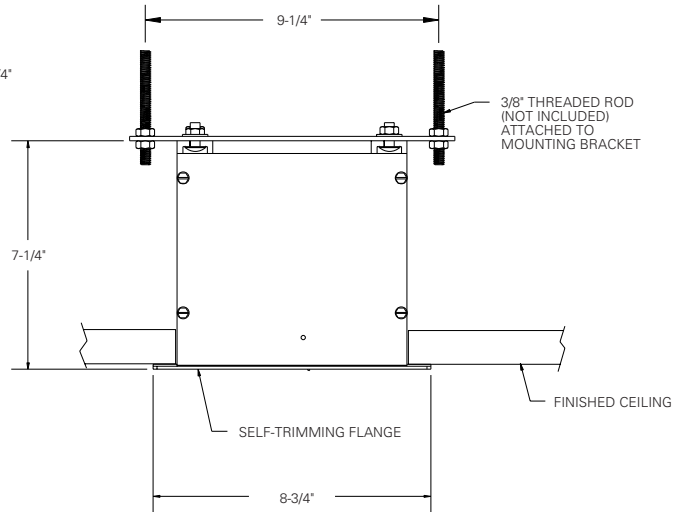
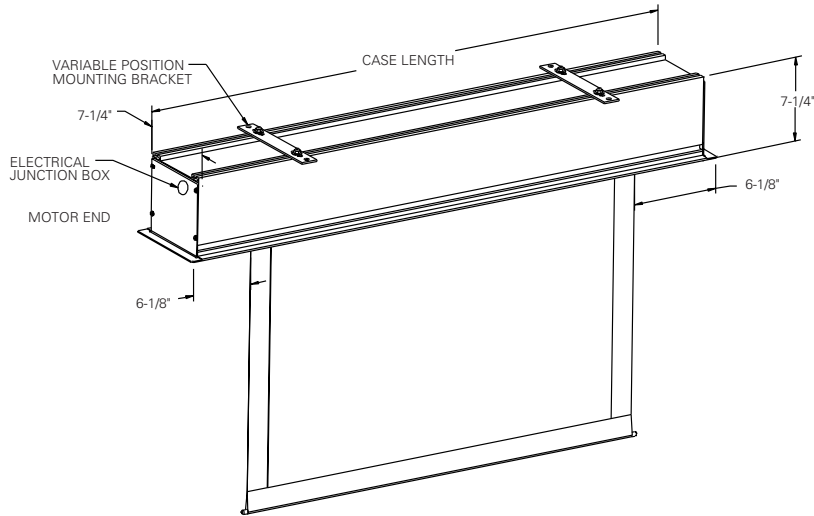
- Matte White
- High Contrast Matte White
- Glass Beaded
- Video Spectra® 1.5
- High Power

Optional Accessories:

- Black "Extra Drop" to lower picture area more than normal. Maximum total drop 13' (396 Cm) including picture area. Length of extra drop required ____Top or ____Bottom of screen.
- White "Extra Drop" to lower picture area more than normal. Maximum total drop 13' (396 Cm) including picture area. Length of extra drop required ____Top or ____Bottom of screen.
- No borders (Black masking borders standard).
- Single motor low voltage control, 3 button with one (1) Switch. Available separately or built-in with screen. Electrical connections will be on right end of screen case on units with built-in LVCs.
 - Radio Frequency Wireless Remote Control for LVC System.
 - Infrared Wireless Remote Control Unit for LVC System.
- Key Locking Cover Plate for 120 V Switch or LVC.
- Key Operated Switch for 120 V only (NOTE: Cannot be used with low voltage system).
- 220/240 Volt (50 Hz) Motor.
- Video Projector Interface - 12 V or 5 V.
- SCB-100 RS-232 Serial Control Board
 - NET-100 Ethernet-Serial Adapter
- SCB-200 RS-232 Serial Control Board
 - NET-200 Ethernet-Serial Adapter
 - WC-200 Wall Controller
 - IR-200 Infrared Remote

ADVANTAGE DELUXE ELECTROL®

SUGGESTED CEILING INSTALLATION



Project:	_____
Architect:	_____
Phone:	_____
Contractor:	_____
Phone:	_____
Supervisor:	_____
Phone:	_____
Supplier:	_____
Date:	_____
Revised:	_____