



AMERICAN SPECIALTIES, INC.

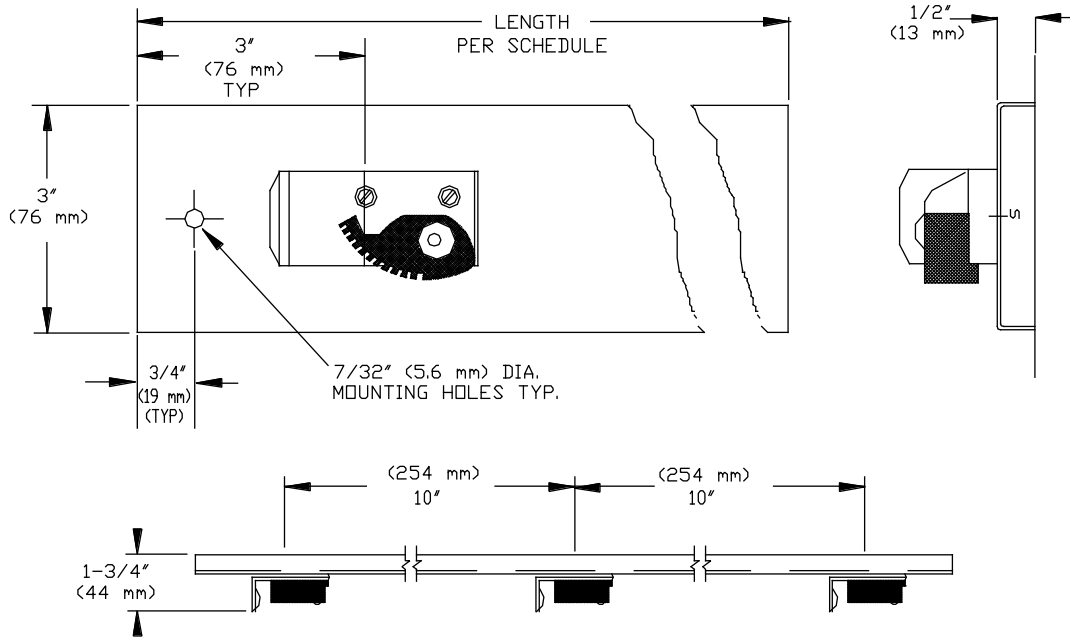
441 Saw Mill River Road, Yonkers, NY 10701 (914) 476-9000

MODEL No: 0796-SERIES

ISSUED: 1-87

REVISED: 2-99

MOP HOLDER RACK



SCHEDULE OF AVAILABILITY		
ASI MODEL N ^o	LENGTH	MOP HOLDER QUANTITY
0796-3	26" (660mm)	3
0796-4	36" (914mm)	4
0796-5	46" (1168mm)	5
0796-6	56" (1422mm)	6

SPECIFICATION

Mop Holder Rack shall be fabricated of one-piece channel alloy 18-8 stainless steel, type 304, N^o 20 gauge with N^o 4 satin finish. Horizontal edges of channel shall return 1/2" (13mm) to wall. Mop holder brackets shall be fabricated of cadmium plated steel and shall be ribbed for rigidity. Each mop holder shall have a pivoting spring loaded serrated rubber cam that shall hold round handles of 7/8" to 1-1/4" (22mm to 32mm) dia. wedged against ribbed clamp plate. Unit shall be surface mounted with hardware supplied. Number of mop holders and length of unit shall be as specified in standard schedule.

Mop Holder Rack shall be Model N^o 0796-3 (or 0796-4 or 0796-5 or 0796-6) as fabricated by American Specialties, Inc., 441 Saw Mill River Road, Yonkers, New York 10701-4913.

INSTALLATION

For general utility mount rack 70" (1778mm) above finished floor (AFF) from bottom of rack with N^o10 self-tapping screws (supplied) through holes provided in channel. For compliance with ADA Accessibility Guidelines, install unit so that top of rack is 54" (1372mm) maximum AFF if clear floor side reach access is provided or 48" (1219mm) maximum AFF if clear floor forward reach access is provided.

OPERATION

Mop or broom handle is pushed into grip-jaw of pivoting serrated rubber cam with upward motion until it seats behind rib on clamp plate. Spring holds cam against handle. Gravity holds mop clamped in position.

Accessory Specialties

AMERICAN DISPENSER

Desert Ray Products

WATROUS INC.